



# EARTH PRIESTESS TEMPLE ARTS TRAINING

~ FACILITATORS IMMERSION ~



MEXICO

OCT 1-13





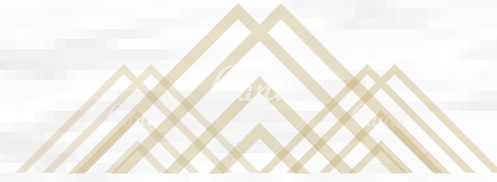
# WELCOME SISTER

RECEIVE A DEEP BREATH FROM THE EARTH  
AND LAND WITH US HERE FOR A MOMENT



THIS IS AN INVITATION  
FOR YOU WHO SIMPLY FEEL IN YOUR  
WOMB, IN YOUR HEART & SPIRIT  
THE CALL TO EMBODY DEEPER IN YOUR  
UNIQUE EARTH PRIESTESS PATH





As we are in the midst of the turning of ages upon the Earth as old narratives are being dismantled and brought into light, crumbling and rebirthing the new, it is more important than ever that woman embodies her Self sourcing and sovereign connection to the Earth, the elements and our service to the Whole.

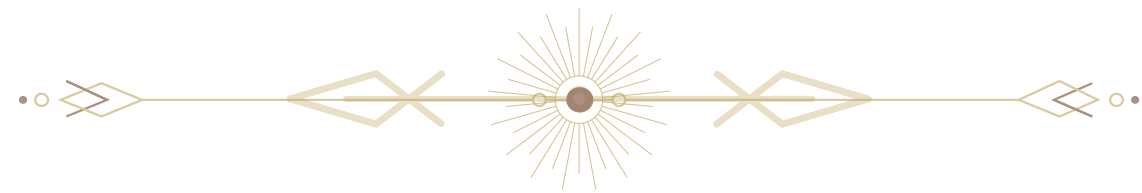
As Mother Gaia herself is calling us all at this time



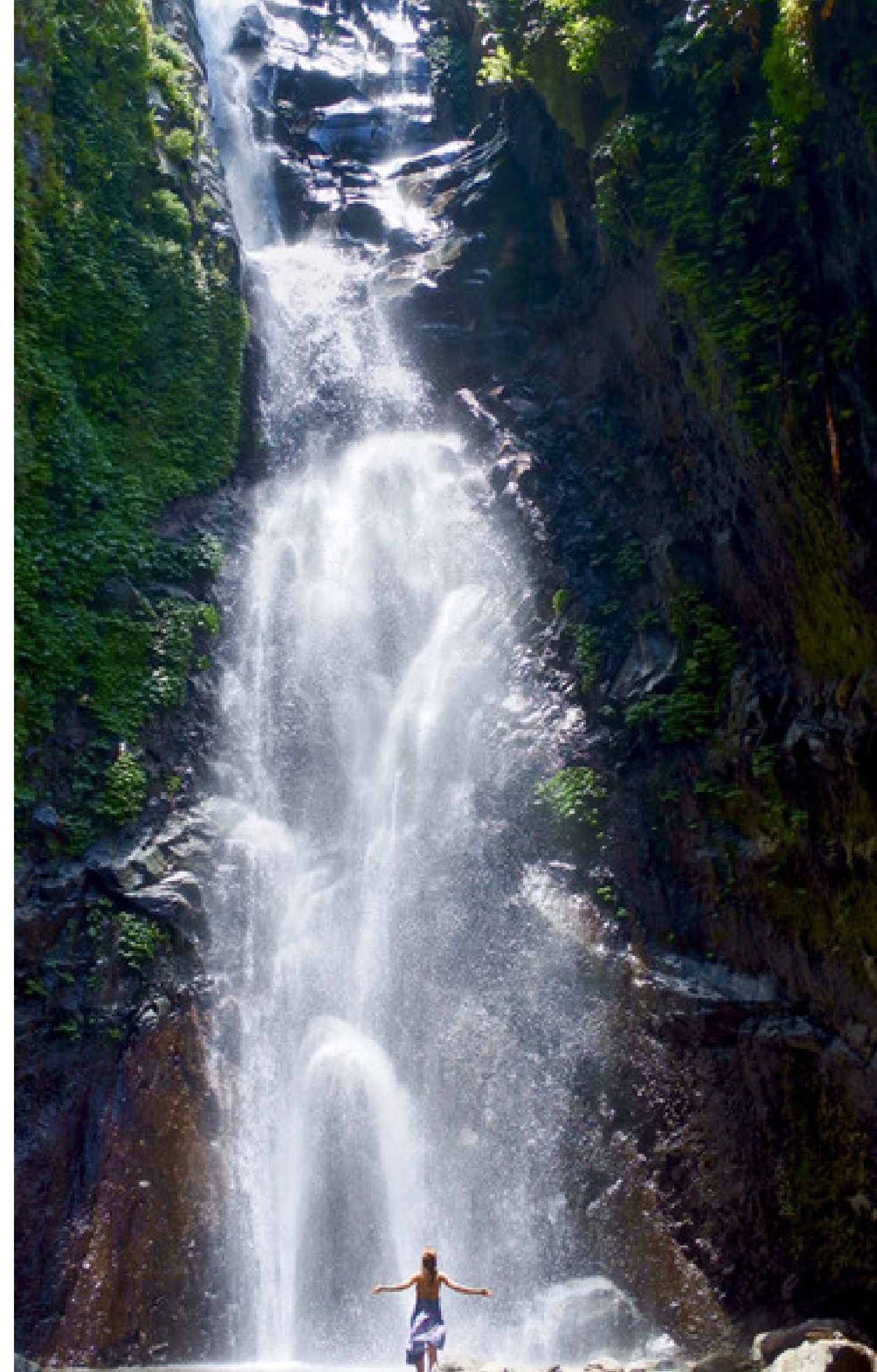


We ask ourselves


- How may I heal and expand myself fully, so that I can stand solid in my essence, in connection, in relation, in service to the Earth at this time?



The Earth Priestess Path is a journey  
for women of all walks of life  
to reclaim, rewire and resource our birthright  
as daughters and guardians of Gaia.





A high-angle photograph of a large group of women lying in a circle on a lush green lawn. They are all wearing white dresses or sarongs and have their eyes closed, suggesting a state of meditation or prayer. The women are of various ethnicities and ages, and their hair colors range from dark to light. The scene is peaceful and harmonious, with the women's bodies forming a dense, circular pattern on the grass. The text is centered over the image in a white, serif font.

YOU ARE WELCOME TO WALK THIS  
PATH IN SISTERHOOD WITH  
THOUSANDS OF WOMEN WEAVING  
ACROSS THE PLANET, IN A UNIFIED  
PRAYER-FIELD OF EMBODIMENT,  
HARMONY AND GRACE  
FOR ALL BEINGS.





The Earth Priestess Temple Arts Training is a lifelong initiation between you, the Earth, the Elements, Spirit & your Body Temple.

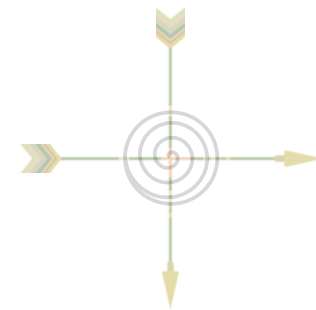




When we gather for intensive immersions in this way, it is within the innerstanding that Pacha Mama is our teacher, and that an Earth Priestess Path is a dedication to listening and learning from Her.



We share tools, teaching  
transmissions & practices rooted in  
feminine shamanic traditions and  
priestess temple arts,  
however



your own inner knowing, guidance &  
intuition will always lead the way







## PREREQUISITE

For this 13day in-person Temple Immersion, we require that you have already completed the 28 day Foundational Earth Priestess Roots Temple Training (Online), or another extensive Immersion with us beforehand. Click [here](#) for more information.





# CURRICULUM





THE FOUNDATIONS ARE PREREQUISITE  
AS WE IN THIS TRAINING DIVE STRAIGHT INTO:

- © Ceremonial Spaceholding
- © Energy training for holding 1:1 & Group Sessions
- © Earth Service & Soul Calling
- © Womb Voice training & Healing with Sound
- © Embodiment & Awakening of Kundalini Earth Shakti
- © Temple Arts Bodywork & Womb Massage
- © Somatic Integration & Emotional Communication  
in Spaceholding





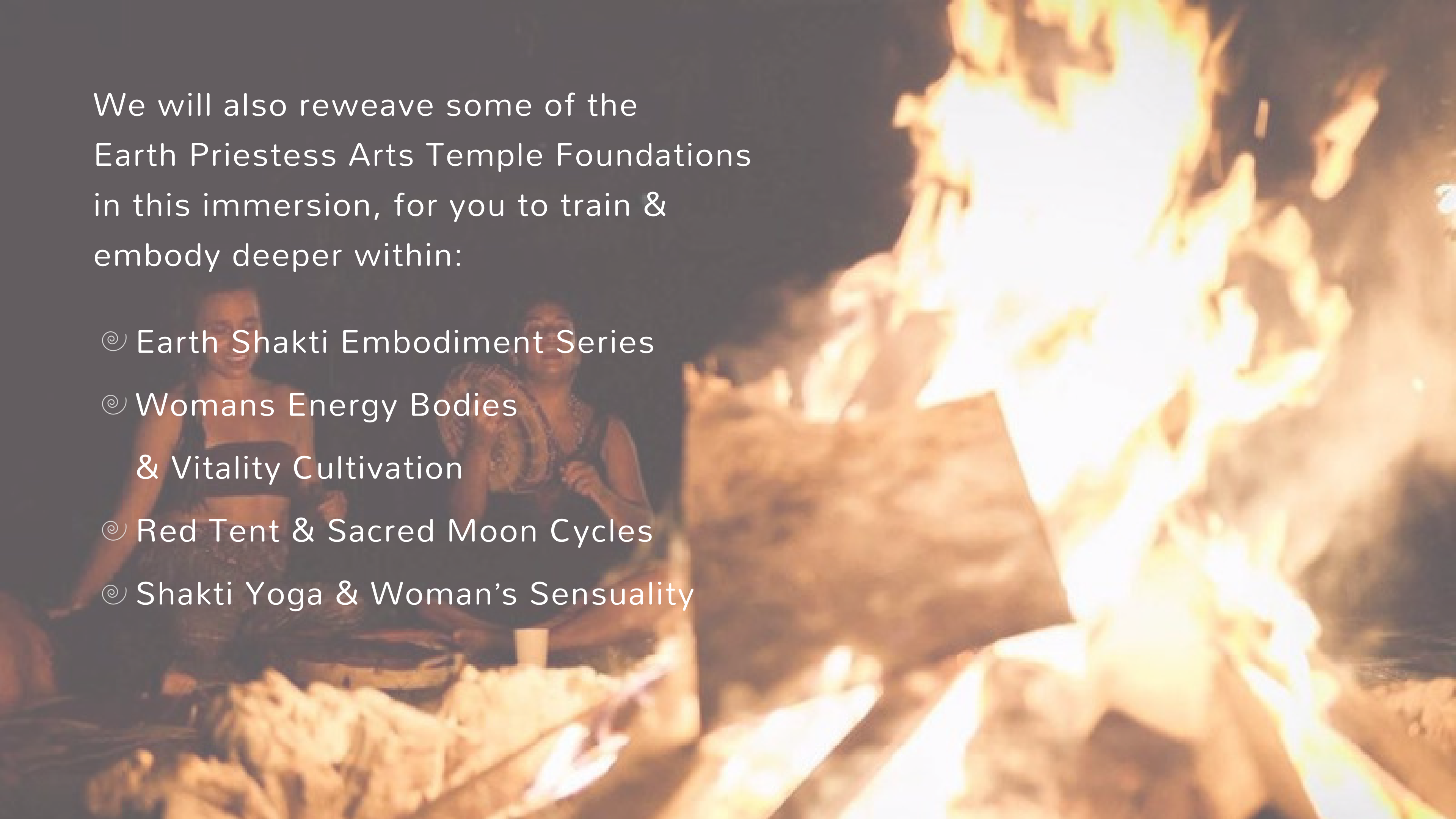


- © Elemental Altar Craft & Field-gridding
- © Multidimensional awareness & holding space for clearing work
- © Ceremonial Fire Training
- © Spirit of Medicine Drum & Prayersong
- © Water Ceremonies & Anointment Rituals
- © Earth Prayer & Collective Dreamweaving
- © Sweatlodge & Medicine Wheel



We will also reweave some of the  
Earth Priestess Arts Temple Foundations  
in this immersion, for you to train &  
embody deeper within:

- © Earth Shakti Embodiment Series
- © Womans Energy Bodies  
& Vitality Cultivation
- © Red Tent & Sacred Moon Cycles
- © Shakti Yoga & Woman's Sensuality





An aerial photograph of a modern temple complex, identified as Sanaa Temple Space, nestled within a dense, lush green forest. The temple features a prominent white, multi-tiered central structure with a large arched entrance at the base, illuminated from within. To the left, a long, low building with a dark, sloped roof is visible. In the background, a large, white, tent-like structure is partially obscured by the trees. The overall scene is serene and secluded, with the temple's architecture contrasting sharply with the surrounding natural environment.

# SANAA TEMPLE SPACE



This training will be held at our  
dear Mexican friends new  
Temple Sanctuary SANAH  
in Yucatán, Tulum.

We have personally witnessed  
Ricardo and his amazing family  
birth this vision into  
manifesting with an energetic  
precision, care and love  
beyond measure.





Each sleeping/dreaming temple is truly a priestess nest for you to rest & recharge in between sessions.









The extraordinary temple space that we work in, along with the sound dome, healing spa, fireplace, fresh cenote-water filled pool, herbal steam sauna & medicinal garden, all serves our journey together










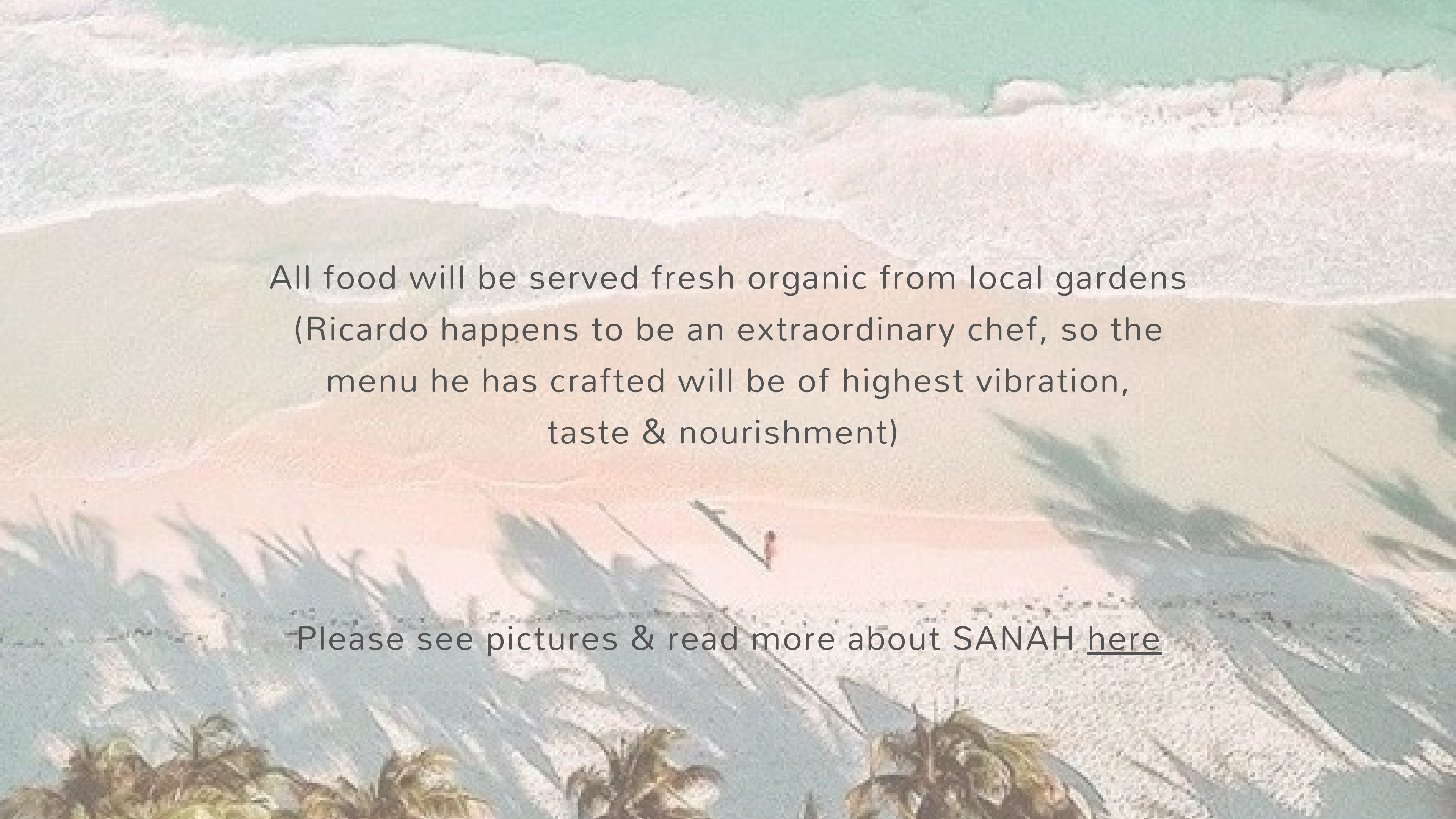




A photograph of a cenote, a natural swimming hole. The water is clear and blue, reflecting the surrounding lush green vegetation. On the left, a wooden platform with a railing sits on a rocky outcrop. A rope bridge, made of two parallel ropes, extends from the right side of the frame into the water. The background is filled with dense tropical plants, including palm trees and various ferns.

Cenote Cristal is a short walk from SANAH,  
(and Mama Ocean only 10min drive) where we will also be  
working with our water rituals



A vibrant tropical beach scene. In the foreground, there are large, green, spiky leaves, possibly from a tropical plant. The middle ground shows a wide, white sandy beach with a few palm trees. The background features turquoise water meeting a clear blue sky. The overall atmosphere is bright and sunny.

All food will be served fresh organic from local gardens  
(Ricardo happens to be an extraordinary chef, so the  
menu he has crafted will be of highest vibration,  
taste & nourishment)

Please see pictures & read more about SANAH [here](#)



A high-angle photograph of a diverse group of young adults sitting in a large circle on a dark, textured ground. They are all leaning forward with their hands flat on the ground, facing towards the center. In the middle of the circle, a heart shape has been drawn on the ground using white powder or chalk. The scene conveys a sense of unity, community, and shared purpose.

# FACILITATORS





# ANNA MARIA

Anna Maria will be your primary support and spaceholder throughout this training. She has been walking the shamanic path of womb wisdom and priestess temple arts for the last decade, in deep devotion to her own inner evolution and service to the Earth.

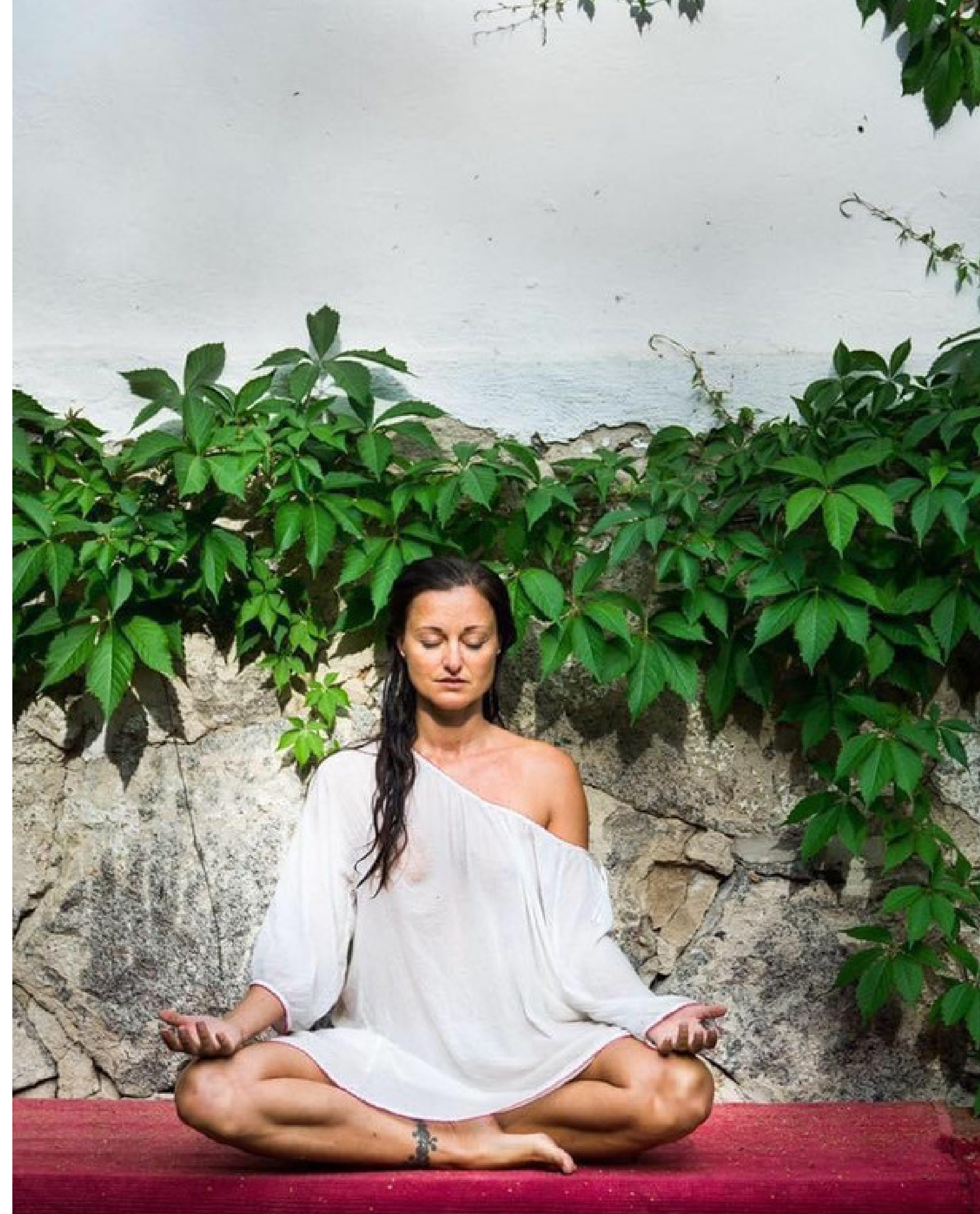
Read more about Anna-Maria [here](#)



# MIRA MOONYA

Mira Dakini's life is a deeply intuitive, creative and explorative journey of the embodiment and union of Spirit and Body. Since 1995, she have been traveling around the world, living in alternative healing communities, studying in the fields of yoga, tantra, relating, movement, touch, healing and meditation.

Read more about Mira [here](#)







# ENERGY EXCHANGE



For 13 nights in your double shared priestess temple room, with all meals, teachings, manuals, ceremonies & facilities included, the energy exchange of this Facilitator's Immersion is

**3300 EUR**

Early bird: 3000EUR  
before July 22nd

**Deposit 50% of tuition.**

Full payment completed 1 month prior to training,  
unless we have agreed on a payment plan.







## Cancellation Policy

Non refundable deposit  
- may be transferred to future training

## Giving back

Parts of the abundance generated from this training gets donated to support local villages and traditions in Mexico & Bali



A close-up, soft-focus photograph of a person's hands. The hands are positioned to hold a small, shallow, light-colored bowl. Inside the bowl, a small white candle is lit, casting a warm glow. Several white flower petals are scattered around the candle. The background is blurred, showing more of the person's hands and some indistinct shapes, suggesting a ritual or a ceremonial setting.

# CONFIRMATION & REGISTRATION

The group field is limited to 13-20 women

To apply and hold your space - Enter [here](#)





# PRE & POST TRAINING CEREMONIES







A group of women are shown in a warm embrace on a grassy hillside. The woman in the foreground wears a vibrant, multi-colored patterned shawl over a purple top. The woman next to her wears a bright yellow lace-trimmed top. Another woman is seen from the back, wearing a light-colored, fringed skirt. The background is a soft-focus view of rolling green hills under a pale sky.

# THANK YOU SISTER

For your walk on this Earth.  
If this work calls your womb  
and soul, we are honored  
and grateful to share this  
journey & path with you.  
Welcome to our Earth  
Priestess Temple Arts  
Sisterhood